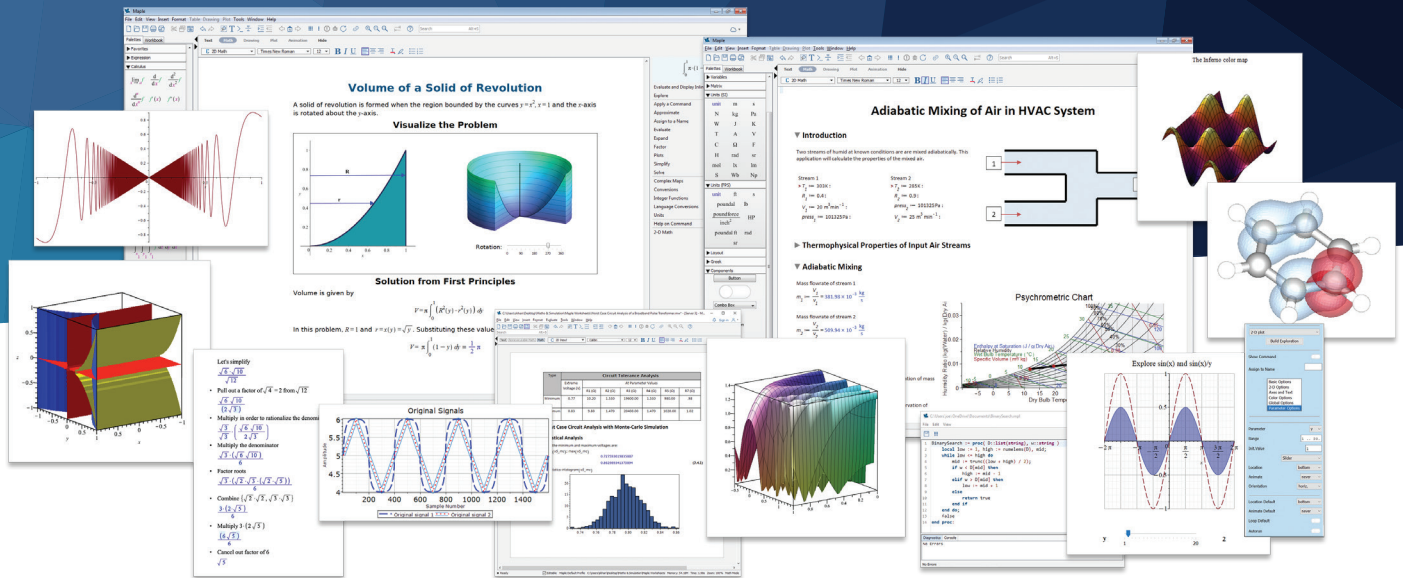


Maplesoft & University of Manchester | Live Webinar

Discover Maple - the essential tool for research involving maths



2-3pm, Wednesday 10th May



Researchers around the world rely on Maple to support ground-breaking work in mathematics, science, engineering, humanities, computing, and more.

Join us on 10th May for a 1-hour webinar to explore the Maple environment with a Maplesoft product expert. We'll help you navigate the interface and work through the fundamental concepts and tools to get you started.

This session will demonstrate the most common features, including units, import and export of data, and conversion to other programming languages. We'll also walk through examples such as:

- Optimisation of a welded beam
- SIR model with births and deaths
- Calibrating response curves against data

All University researchers and PGRs have access to Maple – don't miss this chance to learn more about how Maple can support your research, whatever your discipline.



Scan to register