

Introducing the Mobile Application Development Service



Adrian Harwood

Mobile and GPGPU Application Lead

Research Software Engineering, Research IT

What is it?

- Would your research benefit from using mobile devices?

- **Data Collection** (Surveys)
- Interventions
- Interactive **Games** for Outreach
- Visual Computing
- **Simulation**
- **Teaching** Companions



What is it?

- Research IT has seen an increase in requests for support developing mobile applications.
- We are now providing a **dedicated service** to researchers to provide a consistent, quality service:



**Research IT Mobile Application
Development Service**

What does it include?

1. Assistance with **project scoping** and preparation of the technical parts of **grant proposals** (free support).
2. Preparation of wireframes and **prototypes** for assessing designs and project feasibility.
3. **Research Software Engineers (RSEs)** to develop the application and dependent services.
4. A **project manager** within Research IT to coordinate the project including the deployment process.

Why do I need it?

Wouldn't it be easier to ask a student to develop an app for me?

- Not always the best option, especially if:
 - Application is **critical to project success**.
 - Mistakes could be **costly**.
 - Application needs **releasing publicly under the university name**.
 - Application needs to satisfy data security **regulations**.
 - Application needs **other IT services to function**.

Why do I need it?

- Mobile applications are **not easy coding projects** and present **unique challenges**:
 - Knowledge of different platforms and **specialised APIs** required.
 - Parallel, **multi-threaded programming** paradigm.
 - Experience needed to make decisions on **native vs hybrid vs web**.
 - Performance-critical applications need **careful implementation**.



APACHE
CORDOVA™



PhoneGap



LIVECODE

Why do I need it?

- There are also benefits to using a **professional IT service** to deliver an app for you:
 - Research IT couples both software engineering and research infrastructure services: apps **link in with replicated storage systems** for your data.
 - We will help you with the data security procedures to ensure **information governance compliance**.
 - Most of our RSEs have been researchers and even PIs themselves so **we “get” the research environment**.

Why do I need it?

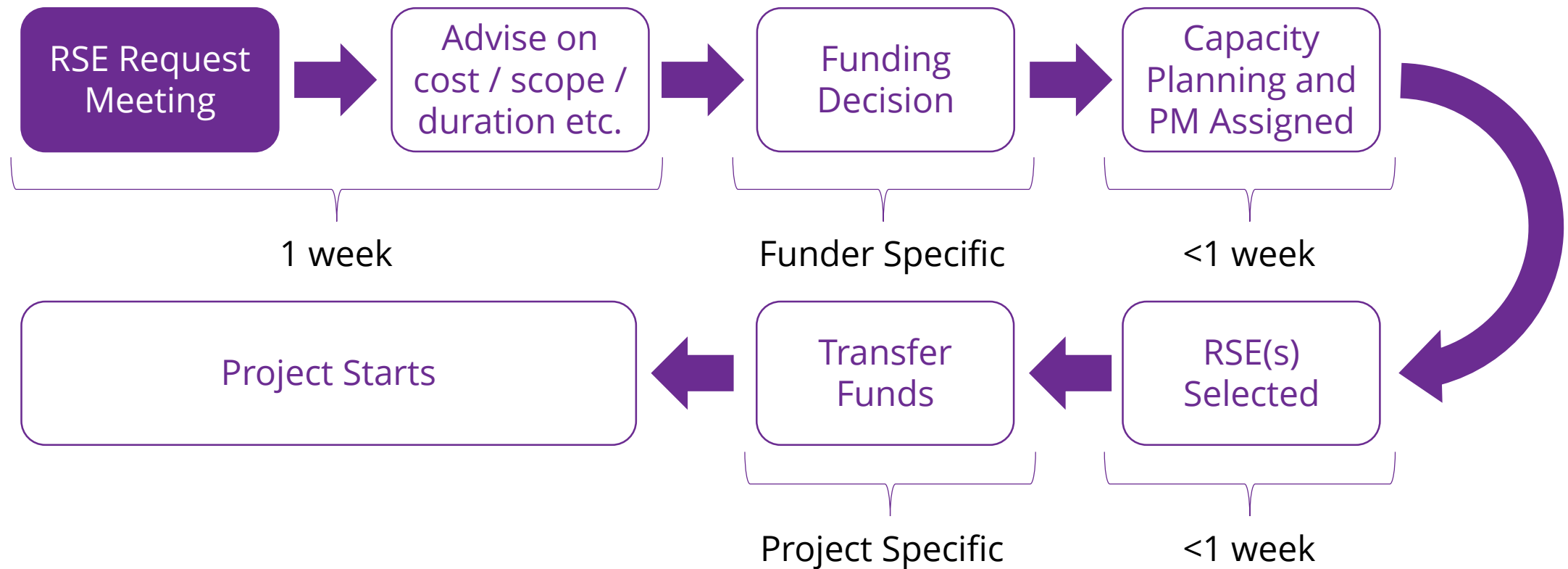
- Compared with an **external company** who might offer a similar service, **but...**
 - Research IT is a support service: helping you do your research is our primary goal, **not making a profit.**
 - We offer great value for money: our **day rate simply covers our costs.**
 - We have in-house **app templates** which are specifically designed for **common research app requests** allowing us to build your solutions quickly.

How do I get access?

- There are 3 methods to request this service:
 1. Raise a Service Desk **ticket** through The Support Portal
 2. Contact your **faculty lead**
 - **Ian Cottam** (FSE Lead)
 - **Andrew Jerrison** (FBMH Lead)
 - **Theresa Teng** (Humanities Lead)
 3. Contact **me** (Adrian Harwood) directly



How do I get access?



How much does it cost?

- In general, RSEs are permanent staff and are treated as a **support service**.
- We are currently in the process of **setting up official guidelines** for costing RSE support with the University's Director of Research Finance.
 - In the meantime, there are two approaches at present:

How much does it cost?

1. To cost RSEs on **proposals** (FEC funding not yet secured):
 - RSE services are costed as a **Grade 7.1 support service**.
 - Your Research Support Office can advise.
2. To pay for RSEs from an **existing university account**:
 - RSE services are charged at a **day rate of £250 / day**.
 - This can be authorised as an **internal transfer** through our finance team.

Example Projects



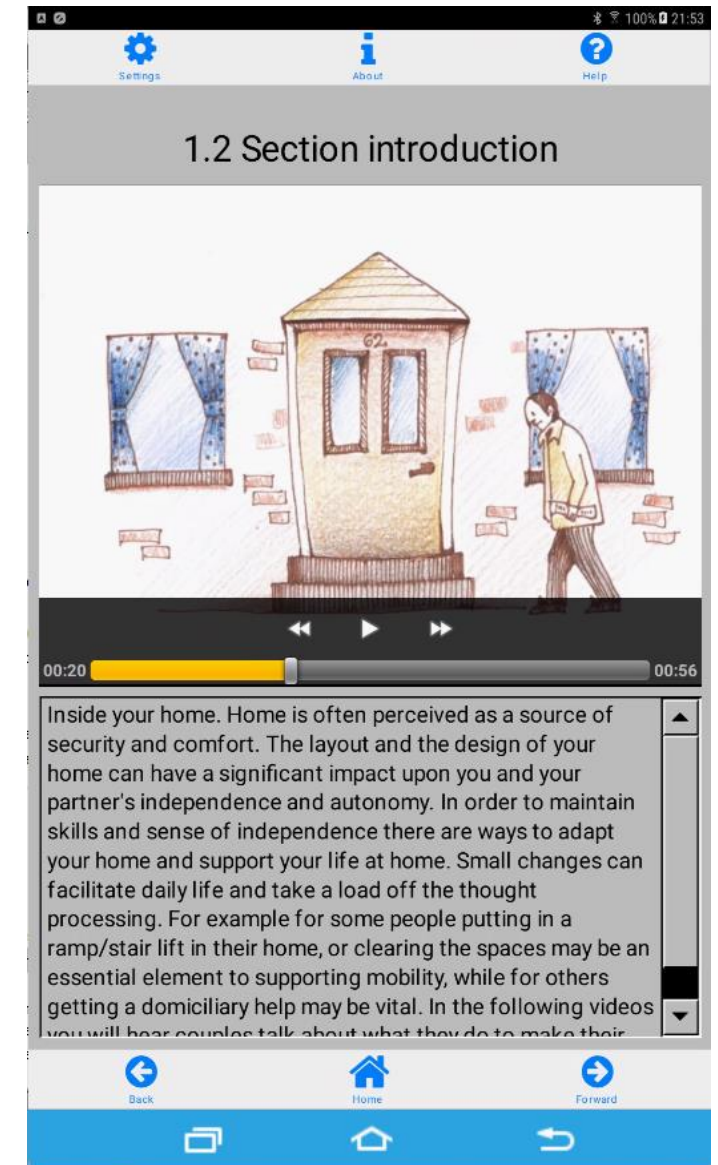
- A project to develop a multi-lingual landscape of Manchester.
- App is a **crucial data collection tool**.
- Cross-platform, web-based application, live on Google Play and Apple App Store.
- Melbourne and Jerusalem variants.

A screenshot of the LinguaSnapp app interface on a mobile device. The status bar at the top shows a Wi-Fi icon, signal strength, 100% battery, and the time 12:02. The app has a top navigation bar with four buttons: "Cancel" (left arrow), "Save" (plus sign), "Upload" (up arrow), and "Delete" (X). Below this is a large photo of a red restaurant sign with text in Arabic, English ("WELCOME"), and Swahili ("Kusoo Dhawaada"). To the right of the photo is a menu with three items: "Language" (blue bar, right arrow), "Context" (grey bar, right arrow), and "Analysis" (grey bar, right arrow). Below the photo is a search icon. The bottom section is a form with a "Title" field containing "Restaurant welcome sign" and a close button. Below the title are two fields: "No. of Languages" with the value "4" and "No. of Alphabets" with the value "2", both with close buttons. At the bottom, there is a section titled "Your current Languages and Translations for this photo" with the instruction "Please enter more in the form below" and a grey box containing the text "No languages or translations have been entered for this photo so far."

Example Projects

- **DemPower**

- A dementia **support, self-help app** for couples where one of the pair is living with dementia.
- Developed as part of a 5 year ESRC/NIHR project.
- Scripted **videos, activities, music, writing**, exercises and links to further information.

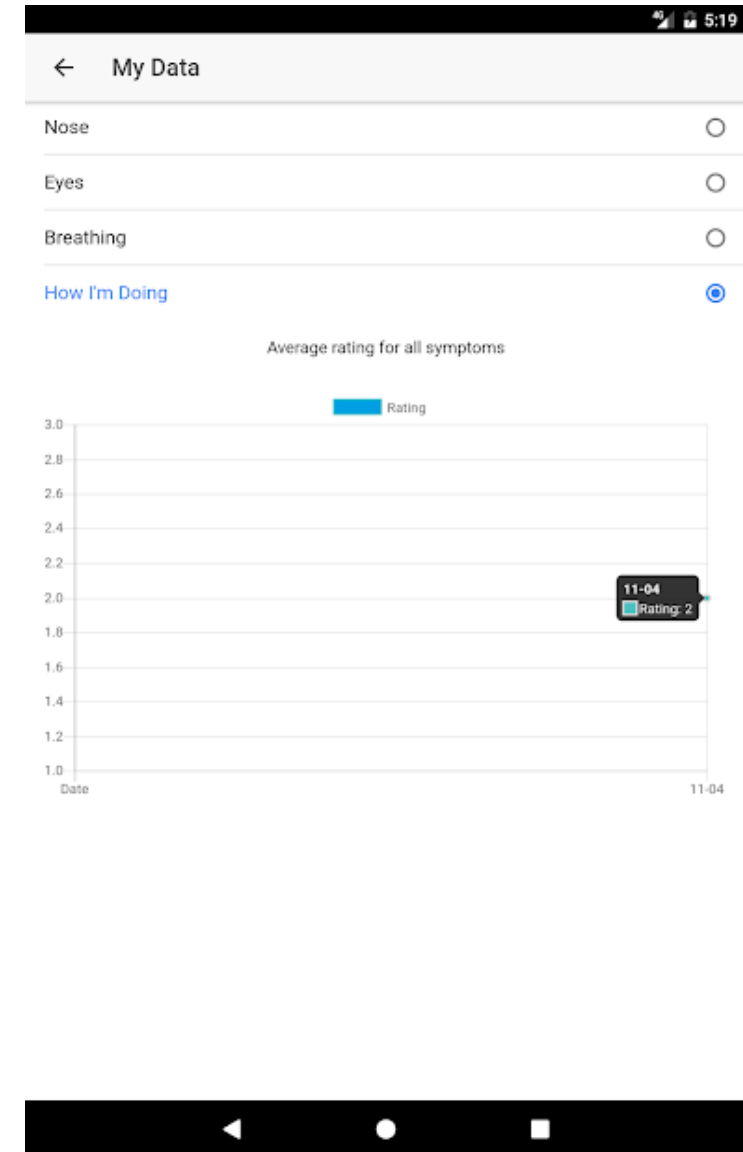


Example Projects

- **Britain Breathing**

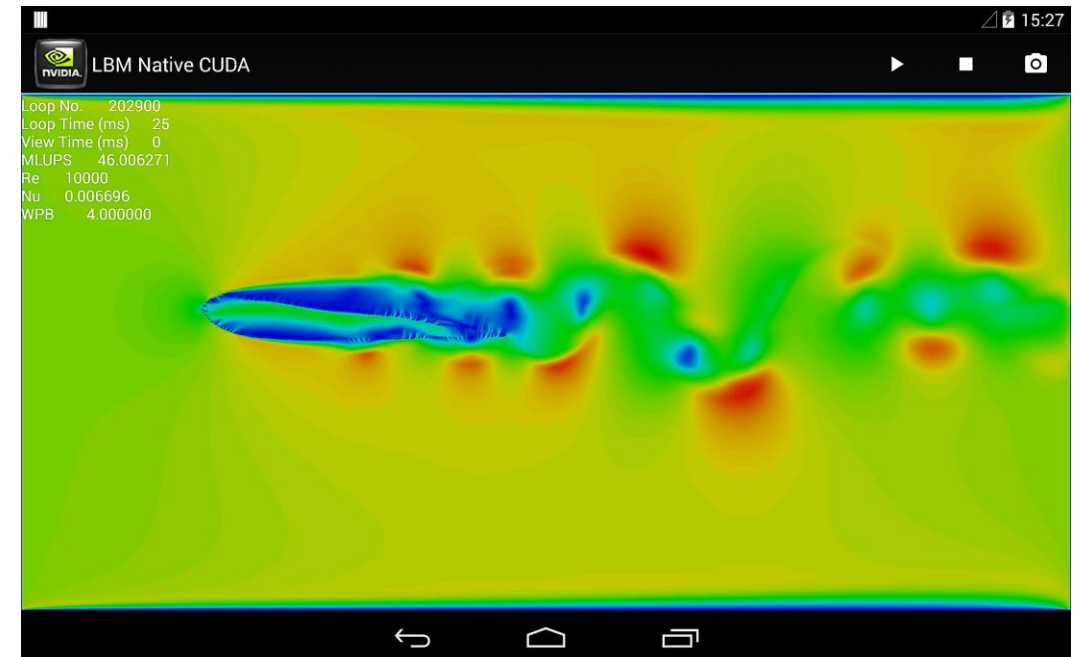


- Helps build a **database of symptoms** of seasonal allergy sufferers.
- A data collection tool with the ability to **track and plot** individuals' progress.
- Currently developing a second version and is a platform for Brazil Breathing.



Example Projects

- We also have expertise in the team in **native** mobile programming for **performance applications**.
- Our expertise includes:
 - **Mobile GPGPU programming** (CUDA and OpenGL)
 - C/C++ on mobile using **JNI**
 - Peer-to-peer connectivity



Take Away

- The Mobile Application Development Service is **live now!**
- Your research does not have to **be** the app: we can develop apps to **support a bigger research goal**.
- We are **flexible**: doesn't have to be 1.0 FTE.
- If you think we can help your research, **please speak to us**.
- We have a **wide variety of expertise** and **in-house templates** to increase productivity.

Adrian Harwood (adrian.harwood@manchester.ac.uk)