

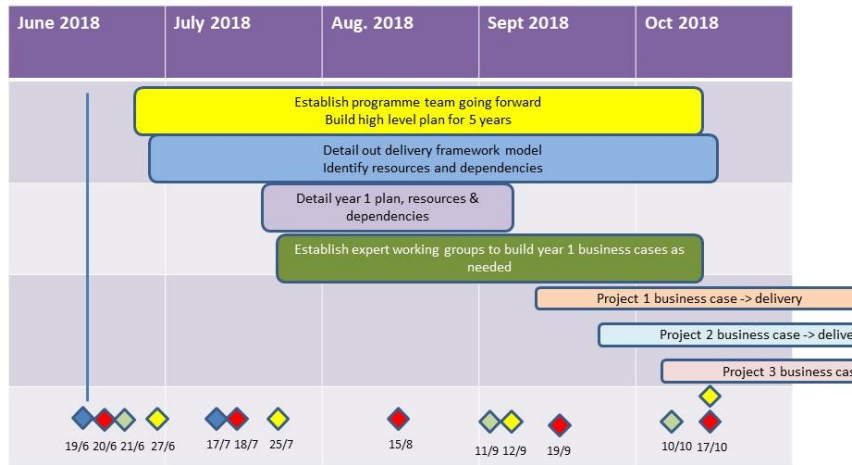


RESEARCH LIFECYCLE PROGRAMME

Update October 2018

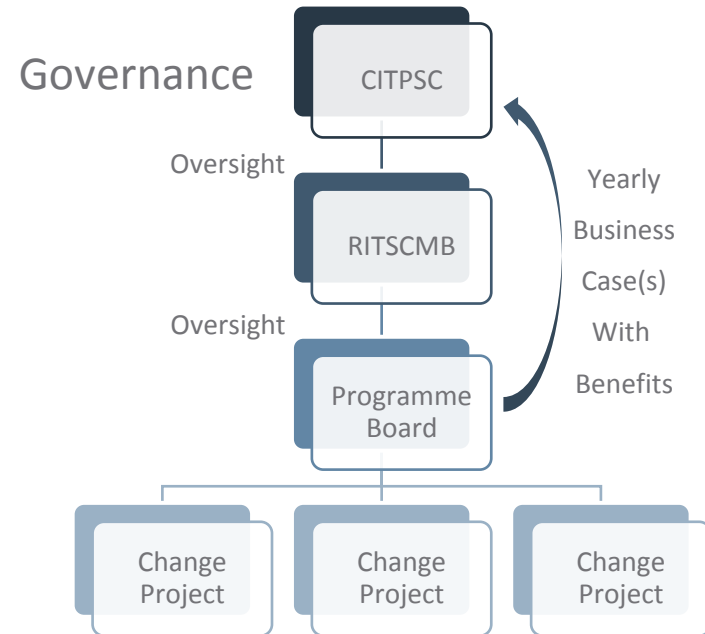
THE RLP FIRST STEPS

Launch to first business case



Align RLP with IT platforms to maximise synergy e.g. BI/MI, My Manchester, ADAM.

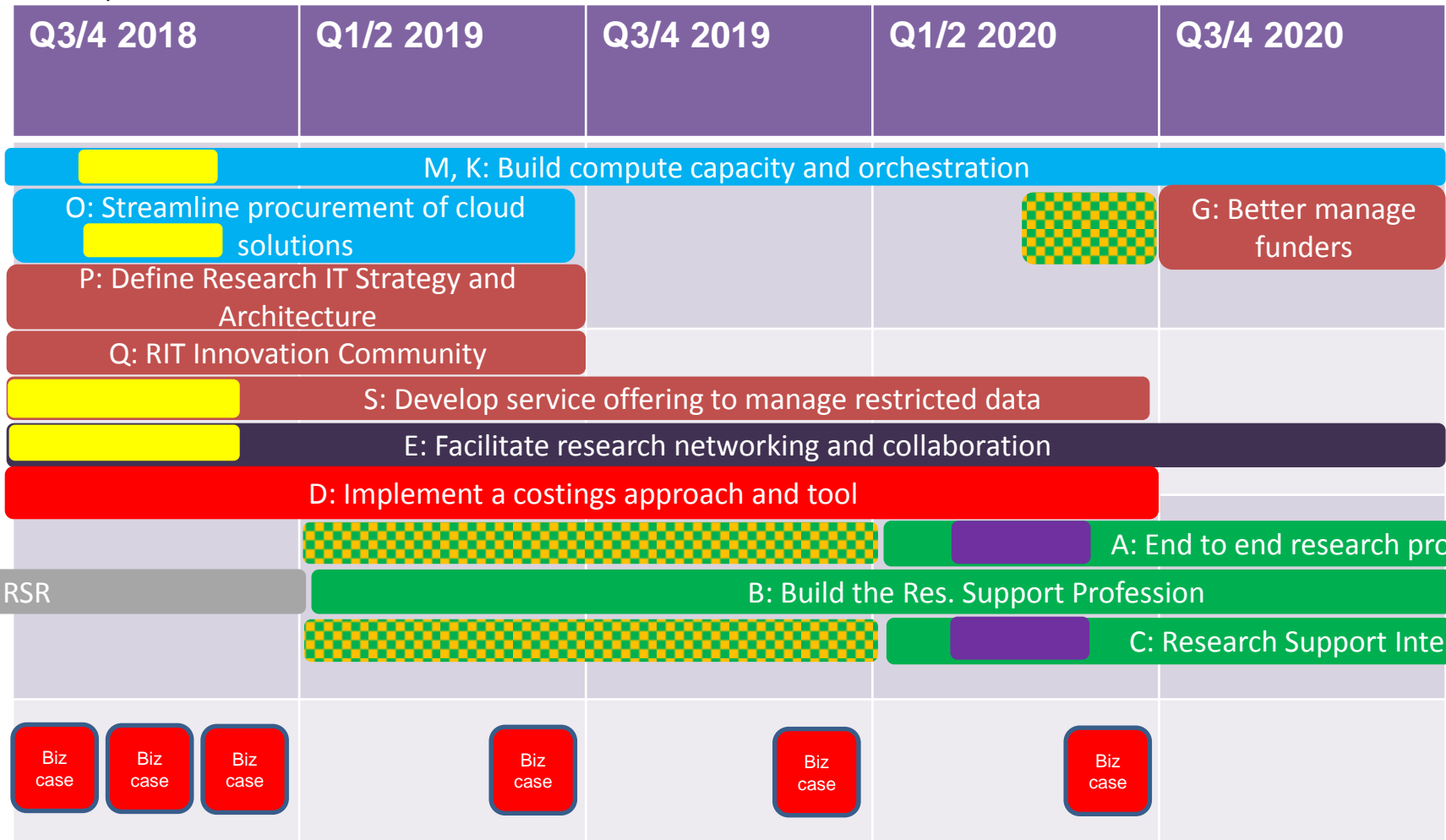
Community Involvement



RLP years 18/19 & 19/20 plan (excludes inflight projects)



Calendar quarters



Computational Research Workshops to prioritise investment in compute infrastructure

Due to be held on Wednesday 17 October and Tuesday 23 October, these workshops are a good opportunity to have your say, how you think we should prioritise our funds. Particularly with regards to expanding researcher's computational infrastructure. This could be anything from more GPUs to a server with 3TB of RAM inside. More information and registration information can be found at

<https://researchitnews.org/2018/10/02/future-of-research-it-infra/> .

RLP Workshop on the scope of RLP facilitating networking and collaboration project (E)

This workshop will be held on 31 October, from 15:00-16:00. It is difficult, due to Manchester's scale and the increasing complexity of interdisciplinary research, for individual researchers and funding partners to know which community of researchers they could be working with or if there are other tools, data or resource they could draw on. This project aims to conduct trails of tools and processes that could support researchers and then to implement the successful ones. The workshop is to help shape the business case for this project. If you are interested in helping please contact Eleanor Tivey eleanor.tivey@manchester.ac.uk

Secure Data additional needs

Lots of needs for facilities for storing and processing secure & restricted data came out in our initial work.

We are now at the stage of fleshing out the use cases for the business case and will be setting up workshops soon.

If you are interested in helping please contact Eleanor Tivey
eleanor.tivey@manchester.ac.uk

Research IT innovation community innovation project lead

We are looking for someone to lead this project for the design and implementation of a community where researchers and support staff can come together to collaborate and share approaches which could be more widely deployed. This project was born from the recognition of the current missed opportunities within the research community.

Overseeing this change project will require work across many areas of the University's structures. For example, working with stakeholders to define ways to introduce this community and ensure its success, as well as working closely with the RLP change team and governance. *With all this in mind, our ideal candidate is a person currently holding a position within the university who has a good understanding of the impacts of technologies on research and wide knowledge of the university's existing researcher community.*

This initial work needs to be concluded by the end of July 2019, and methods of working can be adapted to the person most suitable to lead this project.